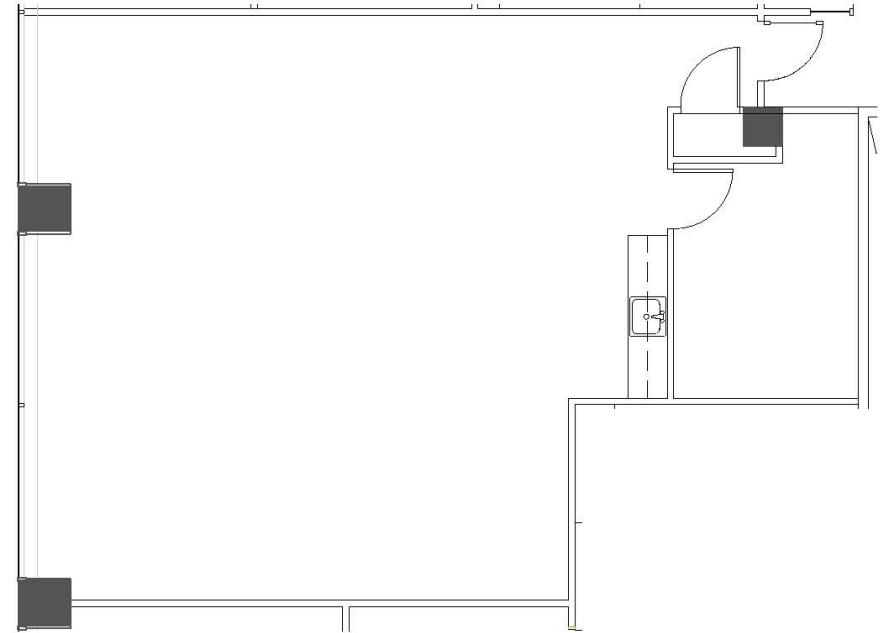
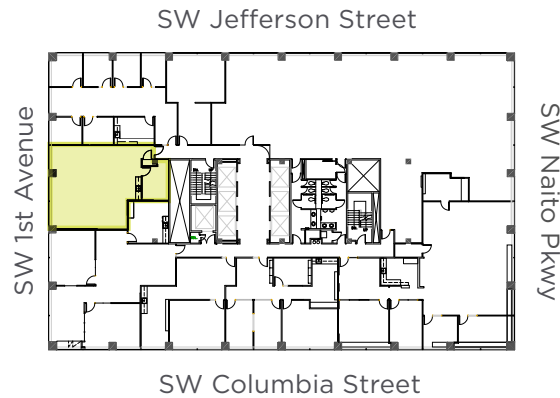


## *Suite 1680*

1,362 RSF

- » Open space with break room
- » New elevator lobby and restrooms in 2020



### **DAN SWIFT, SIOR, CCIM**

Senior Vice President

503 221 4858

[dan.swift@cbre.com](mailto:dan.swift@cbre.com)

### **LANA BALDOCK, CCIM**

Senior Vice President

503 221 4859

[lane.baldock@cbre.com](mailto:lane.baldock@cbre.com)

