

# Riverwood **CORPORATE** Center

N19 W24400 Riverwood Dr. Pewaukee, WI 53188



ENJOY THE VIEW

## KEY HIGHLIGHTS & FEATURES

- › Renovated Tenant Lounge & Conference Room
- › Heated Underground Executive Parking Available
- › Access to a High-Tech Training Center and Classroom
- › Newly Updated Outdoor Patio and Grilling Area
- › Great Views from All Levels Overlooking the Conservancy
- › Located 1/4 of a Mile from I-94
- › Fooda Offerings from Local Restaurants Multiple Times per Week in Neighboring Building

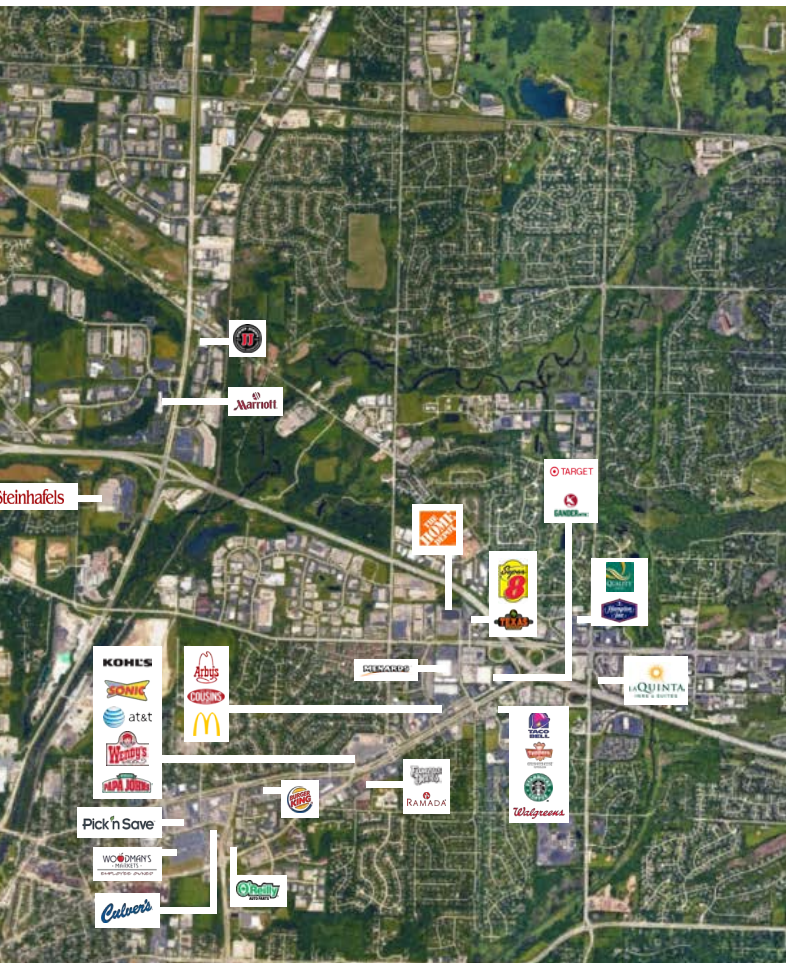
Click to  
View Amenities.

## AMENITIES WITHIN 5 MILES FROM P





## RIVERWOOD CORPORATE CENTER I



**BUILDING SIZE :** Approx. 89,467 SF

**STORIES :** 3

**PARKING :** 5.00/1,000 SF (heated  
underground parking available)

**YEAR BUILT :** 2001

### AVAILABLE SPACE

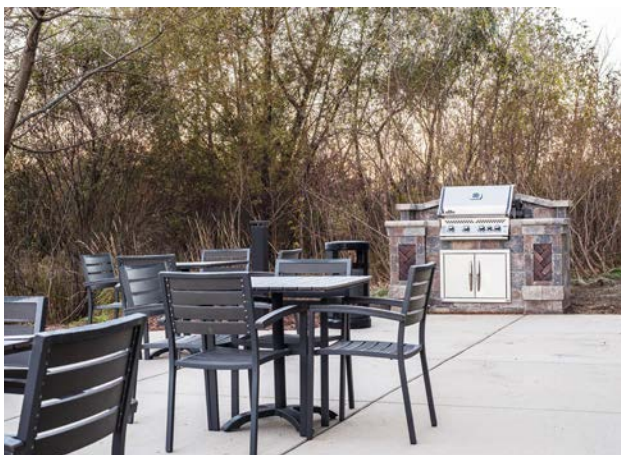
**545 - 56,119 RSF**

### LEASE RATE

**\$15/SF NNN**

### NNN EXPENSES:

**\$9.70/SF**







## CONTACT US

### **Joe Moritz**

414 278 6871 (direct)  
joe.moritz@colliers.com

### **Lacey Fisher**

608 408 9803 (direct)  
lacey.fisher@colliers.com



**Colliers | Wisconsin | 833 E Michigan St., Suite 500 | Milwaukee, WI 53202 | P: +1 414 276 9500**

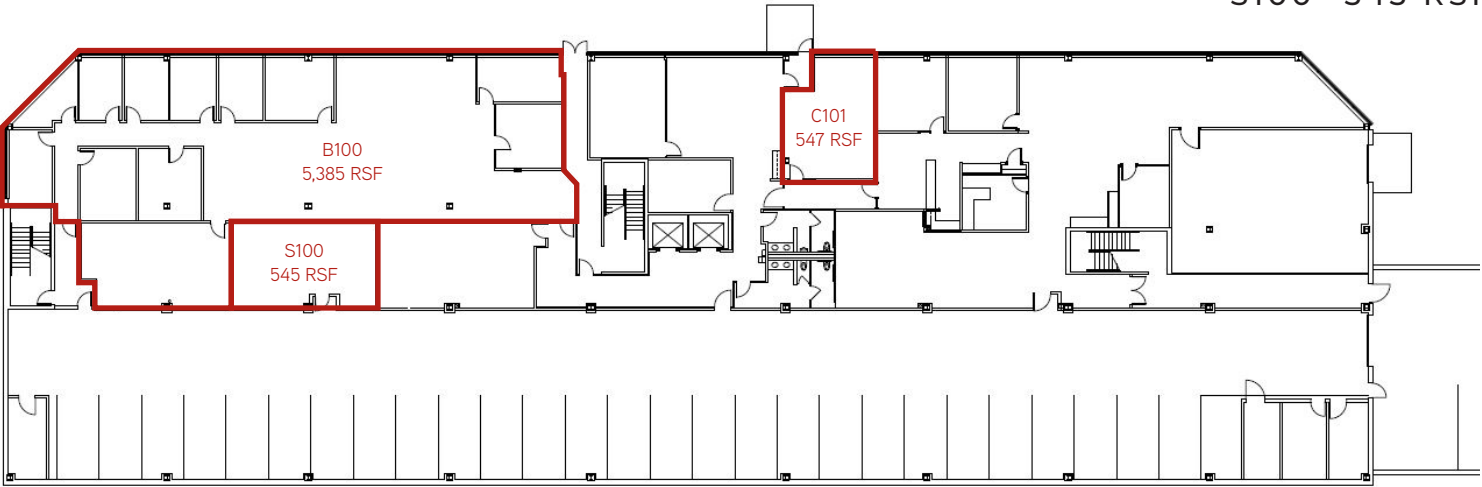
This document has been prepared by Colliers International for advertising and general information only. Colliers International makes no guarantees, representations or warranties of any kind, expressed or implied, regarding the information including, but not limited to, warranties of content, accuracy and reliability. Any interested party should undertake their own inquiries as to the accuracy of the information. Colliers International excludes unequivocally all inferred or implied terms, conditions and warranties arising out of this document and excludes all liability for loss and damages arising there from. This publication is the copyrighted property of Colliers International and/or its licensor(s). ©2021. All rights reserved.

LOWER LEVEL

B100 - 5,385 RSF

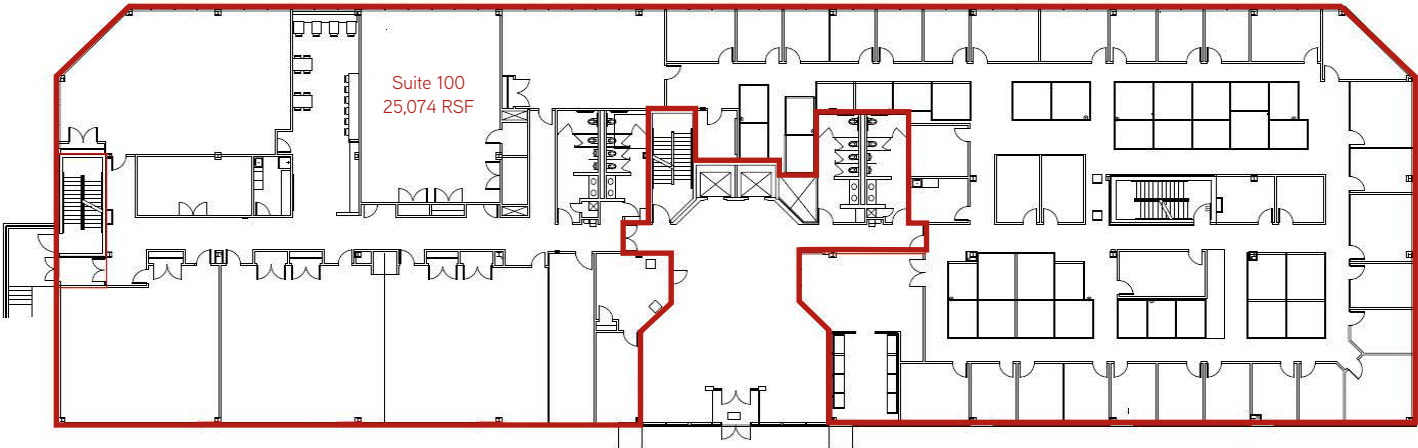
C101 - 547 RSF

S100 - 545 RSF



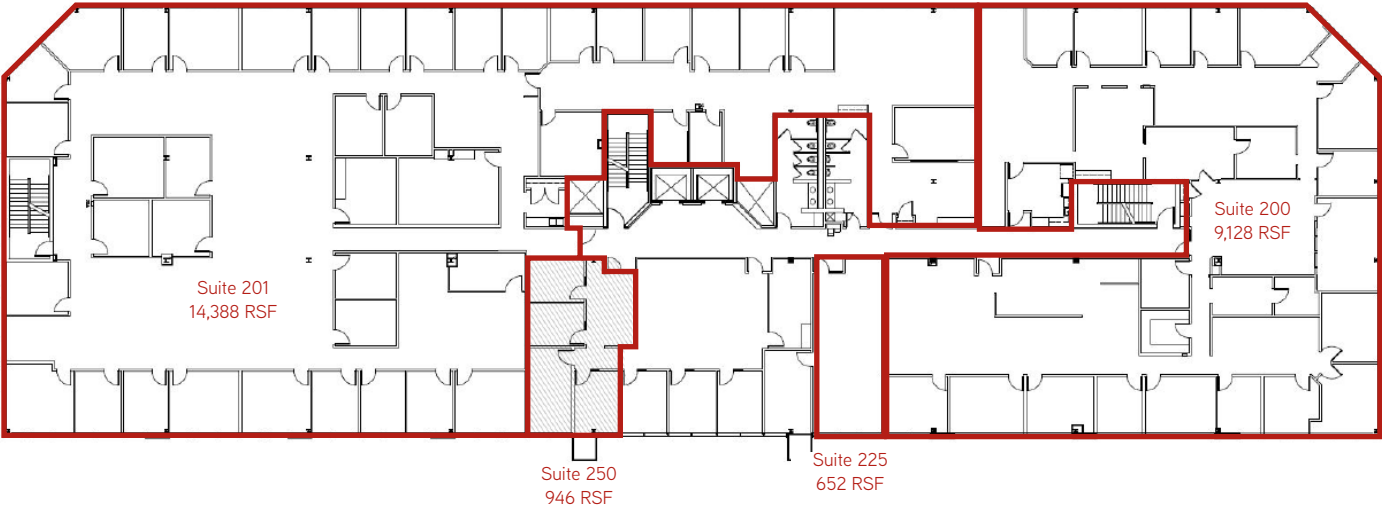
FULL FIRST FLOOR

SUITE 100 - 25,074 RSF



SECOND FLOOR

- SUITE 200 - 9,128 RSF
- SUITE 201 - 14,388 RSF
- SUITE 225 - 652 RSF
- SUITE 250 - 946 RSF



THIRD FLOOR

- SUITE 385 - 1,083 RSF

