


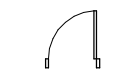


SUMMARY

OFFICES	4
WORKSTATIONS	18
LG. CONFERENCE	1
SM/ MD. CONFERENCE	2
HUDDLE AREAS	1
WELLNESS	1
COPY/ PRINT	1
STORAGE/ IT	1
PHONE	1

LEGEND

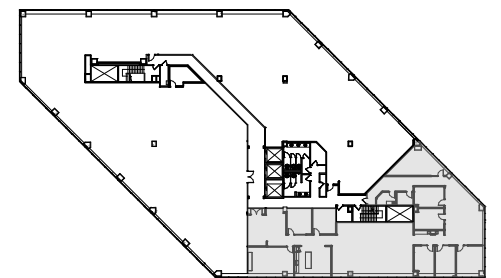
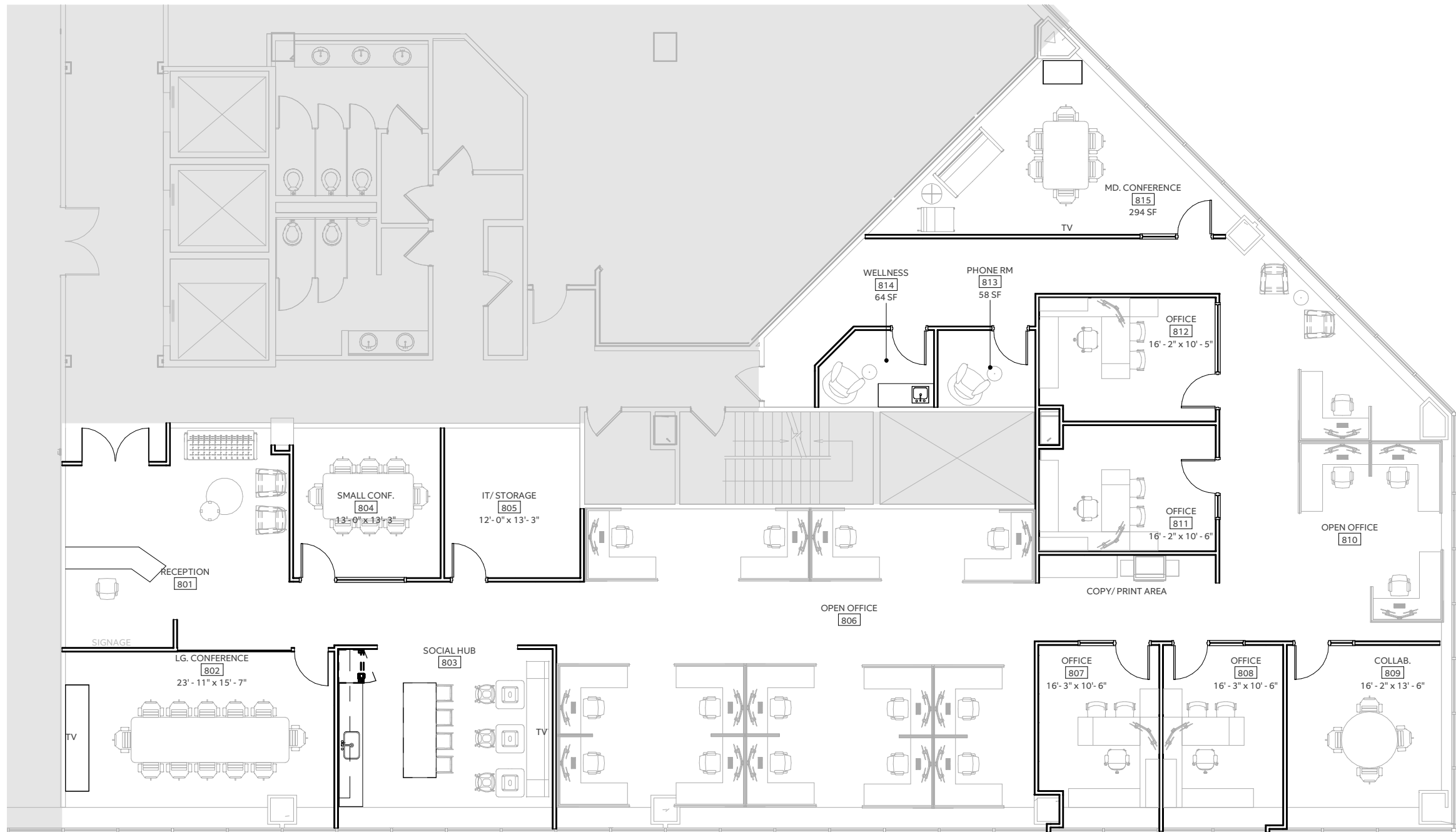
EXISTING OR NEW CONSTRUCTION

-  EXISTING WALL
-  NEW WALL
-  PARTIAL HEIGHT WALL
-  NEW OR RELOCATED DOOR & FRAME

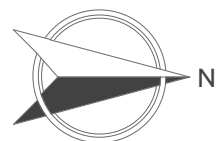
SPACE PLAN APPROVAL

APPROVAL DATE _____
 APPROVAL SIGNATURE _____

ALL FURNITURE SHOWN IS FOR SCHEMATIC PURPOSES ONLY AND NOT TO BE CONSIDERED FINAL.
 SUITE HAS NOT BEEN VERIFIED BY PARALLEL DESIGN GROUP.
 DRAWINGS DO NOT REFLECT GUIDELINES SET FORTH BY CDC OR OTHER GOVERNMENT AGENCY GUIDELINES RELATED TO COVID-19.



KEYPLAN

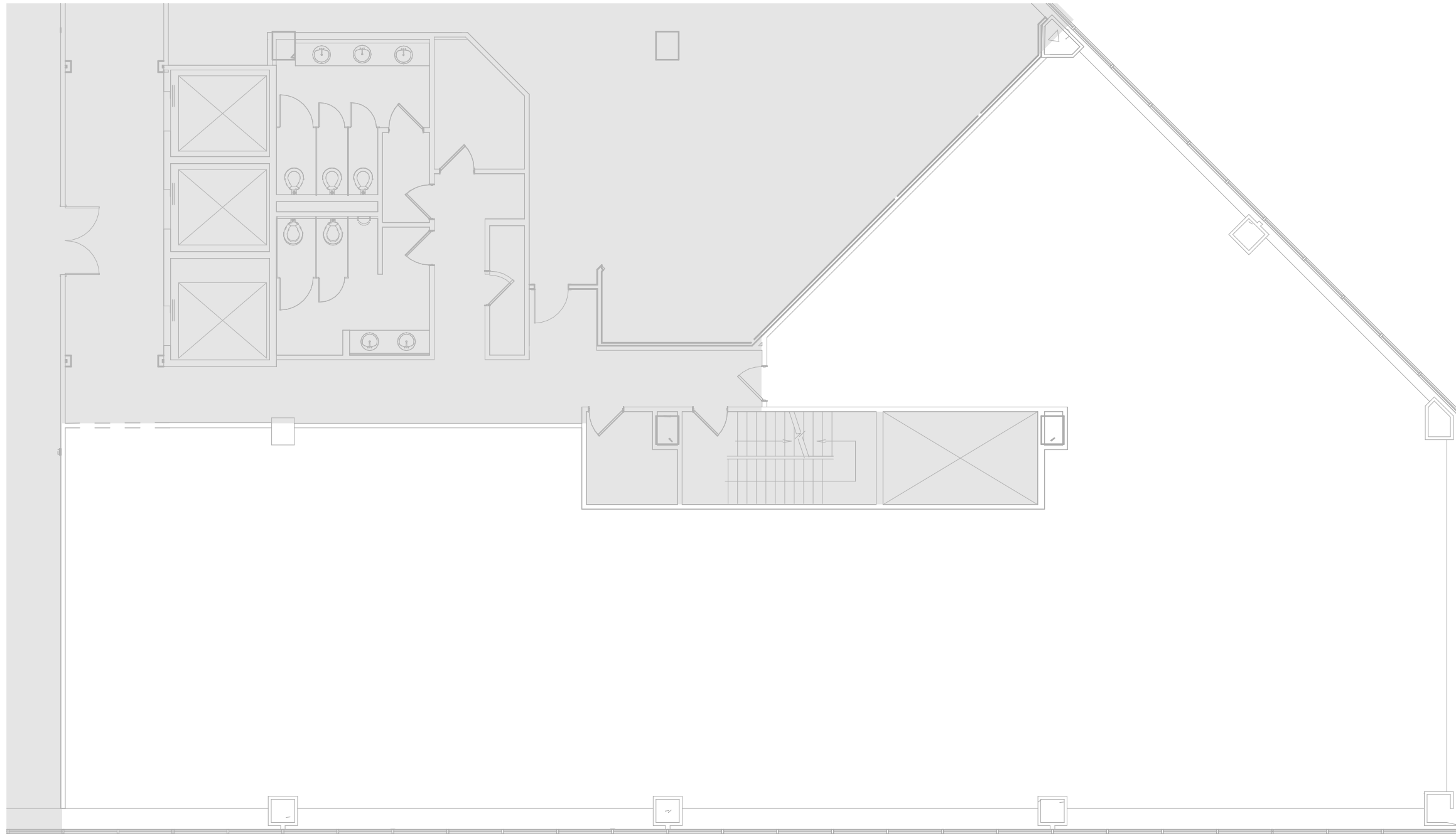


[RENTABLE SQ.FT.]
 7,243 SF
[SCALE]
 3/32" = 1' - 0"

MERIDIAN MARK SPEC SUITE
 EIGHTH FLOOR SPACE PLAN
 MERIDIAN MARK II - SUITE 850
 11711 N MERIDIAN STREET CARMEL, INDIANA 46032

[PROJ. #]
 2021.357
[DATE | REVISION]
 01.11.2022 | 01

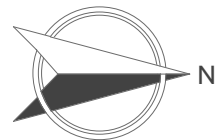




LEGEND
ITEMS TO BE REMOVED

----- WALL

--- DOOR



[RENTABLE SQ.FT.]
7,243 SF
[SCALE]
3/32" = 1' - 0"

MERIDIAN MARK SPEC SUITE
EIGHTH FLOOR SPACE PLAN DEMO
MERIDIAN MARK II - SUITE 850
11711 N MERIDIAN STREET CARMEL, INDIANA 46032

[PROJ. #]
2021.357
[DATE | REVISION]
01.11.2022 | 01

