

**SUITE A150**  
**5,450 RSF**  
**NE CORNER**

WORKPLACE

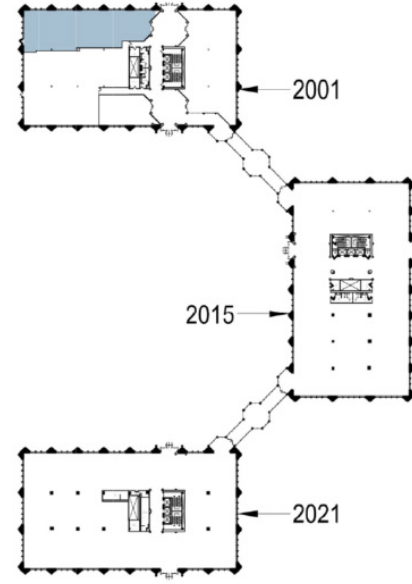
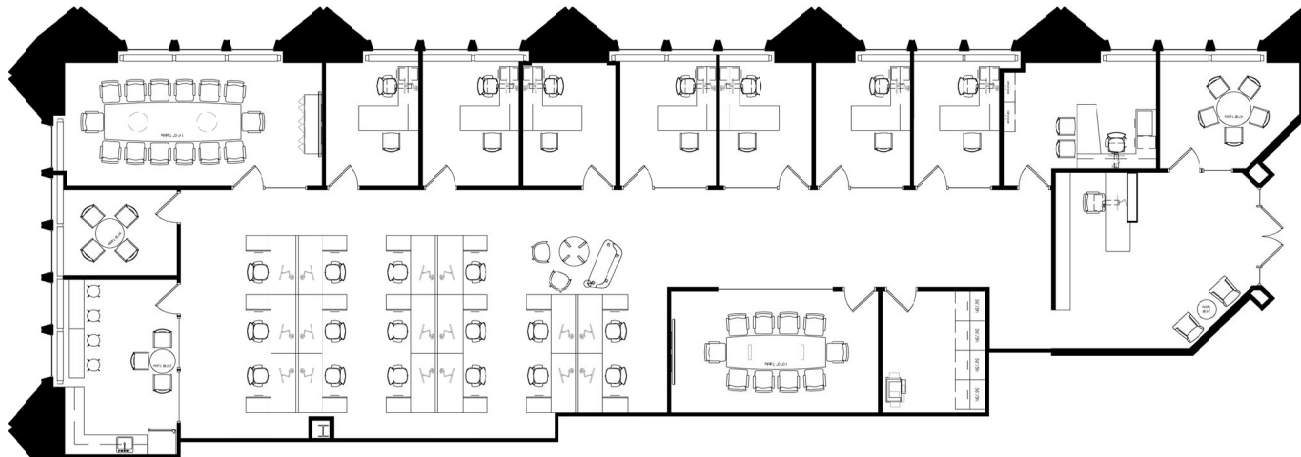
- 8 private offices
- 17 workstations

COMMON

- dedicated reception
- kitchen/lounge
- copy/printer station
- 2 huddle rooms
- 2 conference rooms (10-14 people)

OTHER

- Lobby ID
- 12' Ceilings



Key Plan

For leasing information:

[CLICK HERE TO EXPERIENCE COMMERCE PLAZA  
WWW.COMMERCE-PLAZA.COM](http://WWW.COMMERCE-PLAZA.COM)

**Jack Connors**  
773.304.4112  
[jack.connors@am.jll.com](mailto:jack.connors@am.jll.com)

**Jeff Shay**  
773.858.1692  
[jeff.shay@am.jll.com](mailto:jeff.shay@am.jll.com)

