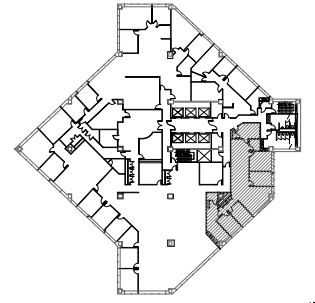
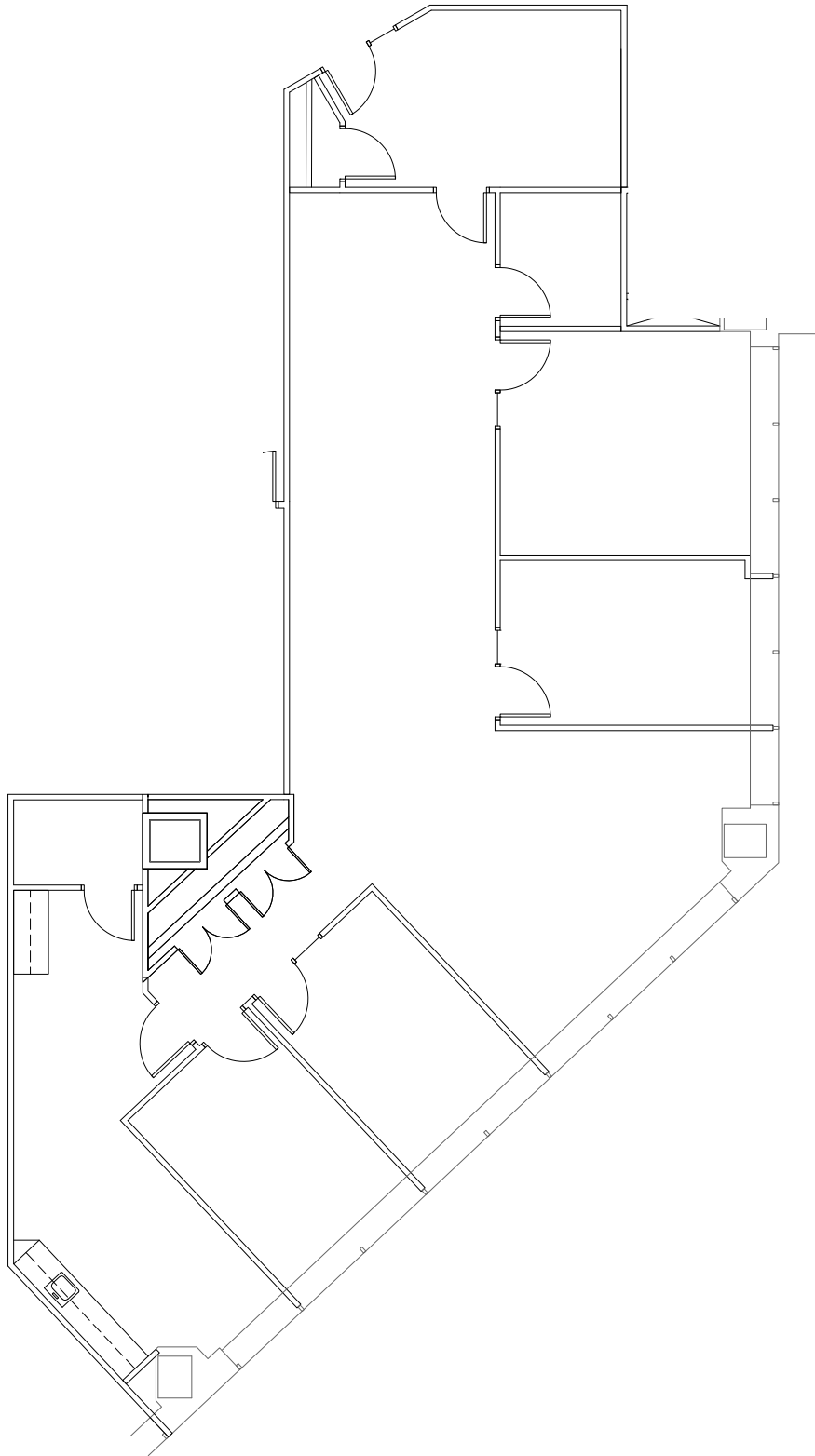




Zeller Realty Group®



KEY PLAN
NOT TO SCALE

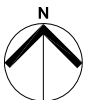


schott design
www.schottdesign.com

SCALE: NOT TO SCALE
PROJECT: 2019.816
PROJECT MGR: AS

SUITE 940

CAPITAL CENTER - NORTH TOWER
251 N. ILLINOIS ST., INDIANAPOLIS, INDIANA



2,589 RENTABLE SQ. FT.
DATE: 07.03.19