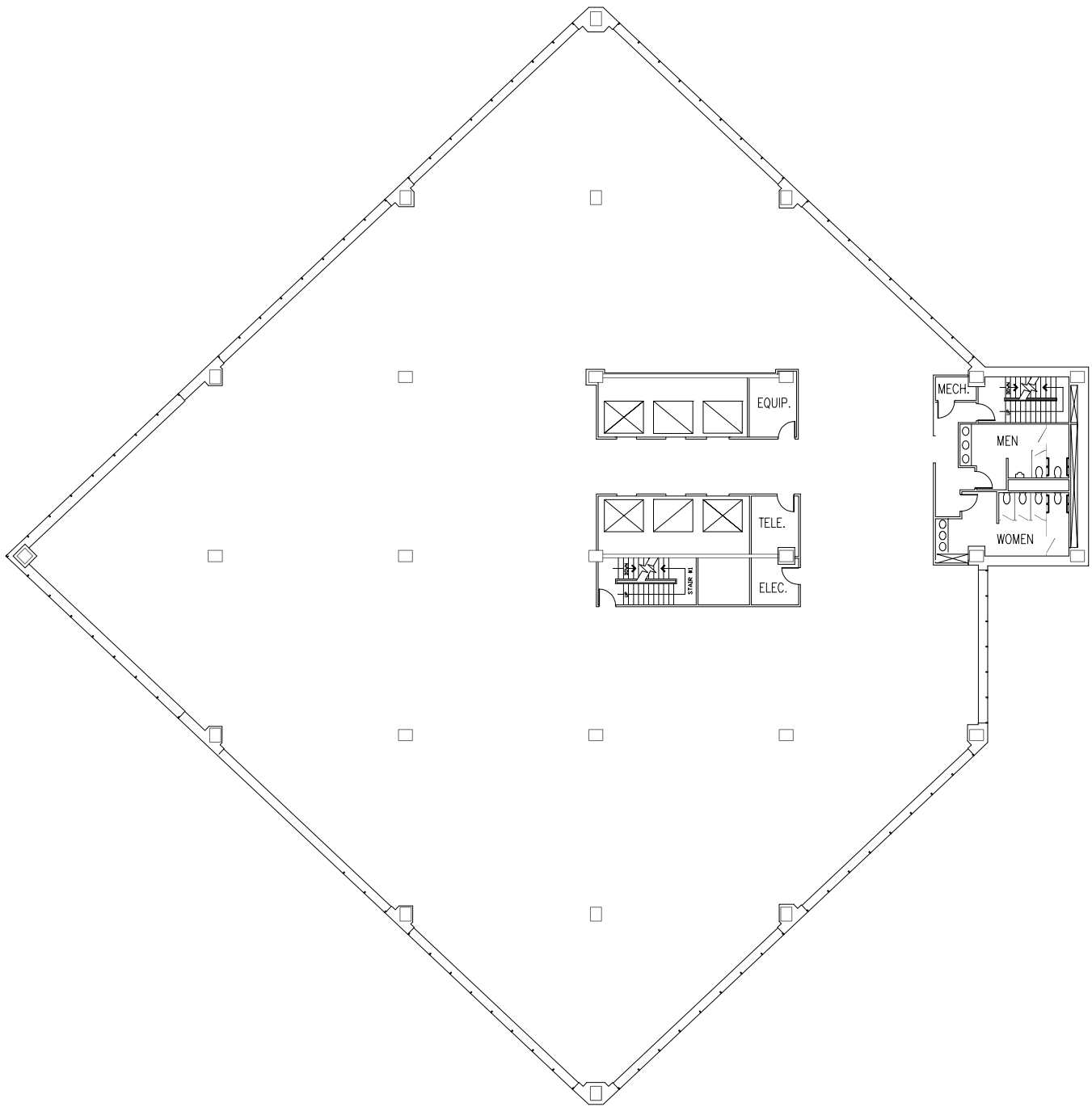




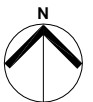
Zeller Realty Group®



schott design
 www.schottdesign.com

SUITE 1400

CAPITAL CENTER - NORTH TOWER
 251 N. ILLINOIS ST., INDIANAPOLIS, INDIANA



SCALE: NOT TO SCALE
 PROJECT: 2018.816
 PROJECT MGR: AS

21,454 RENTABLE SQ. FT.
 DATE: 09.28.18