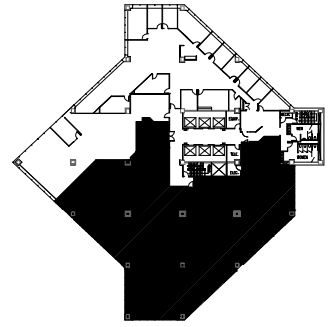
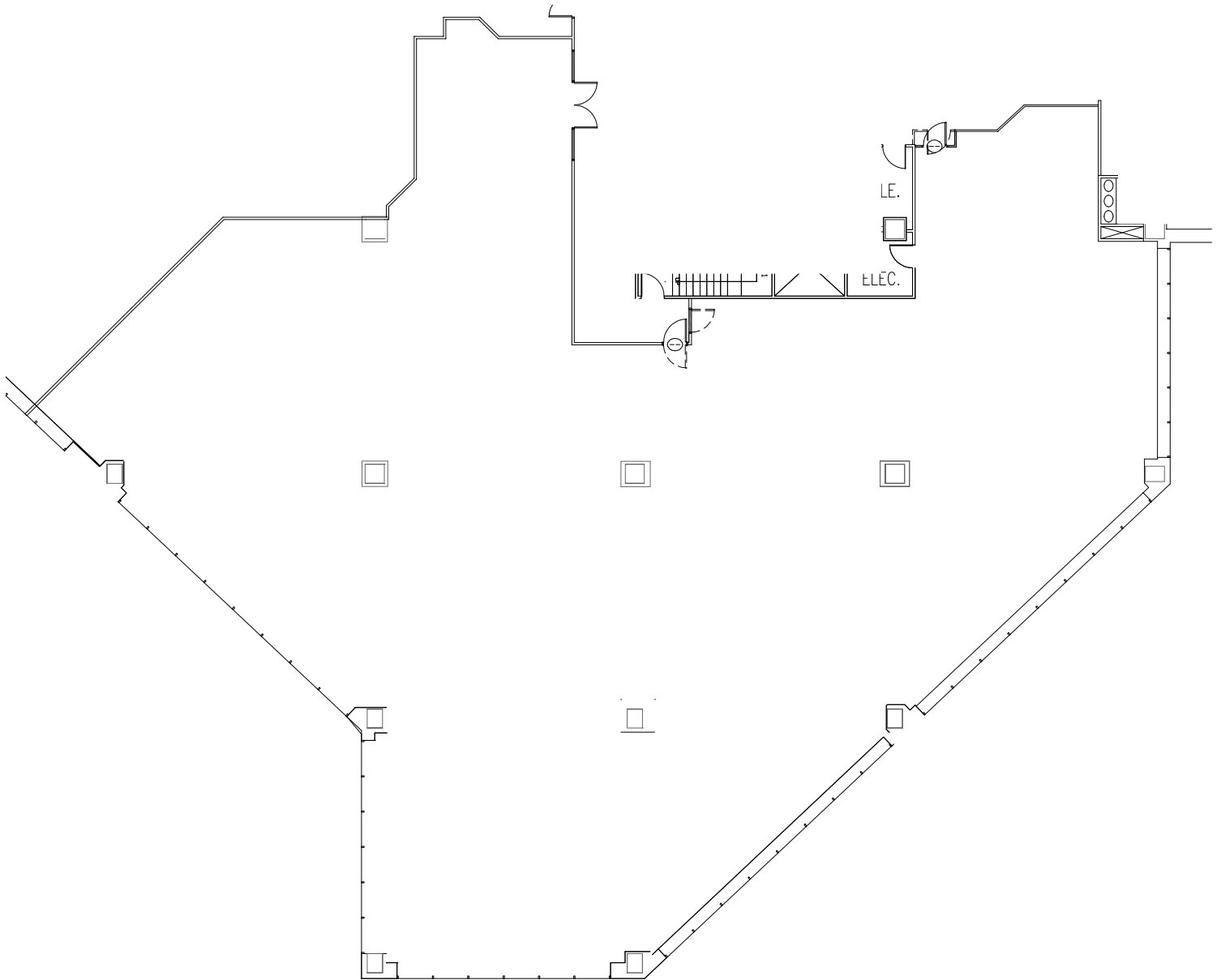




Zeller Realty Group®



**11TH FLOOR KEY PLAN**  
NOT TO SCALE

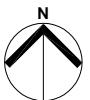


**schott** design  
www.schottdesign.com

SCALE: NOT TO SCALE  
PROJECT: 2018.816  
PROJECT MGR: AS

# SUITE 1100

CAPITAL CENTER - NORTH TOWER  
251 N. ILLINOIS ST., INDIANAPOLIS, INDIANA



11,757 RENTABLE SQ. FT.  
DATE: 09.27.18