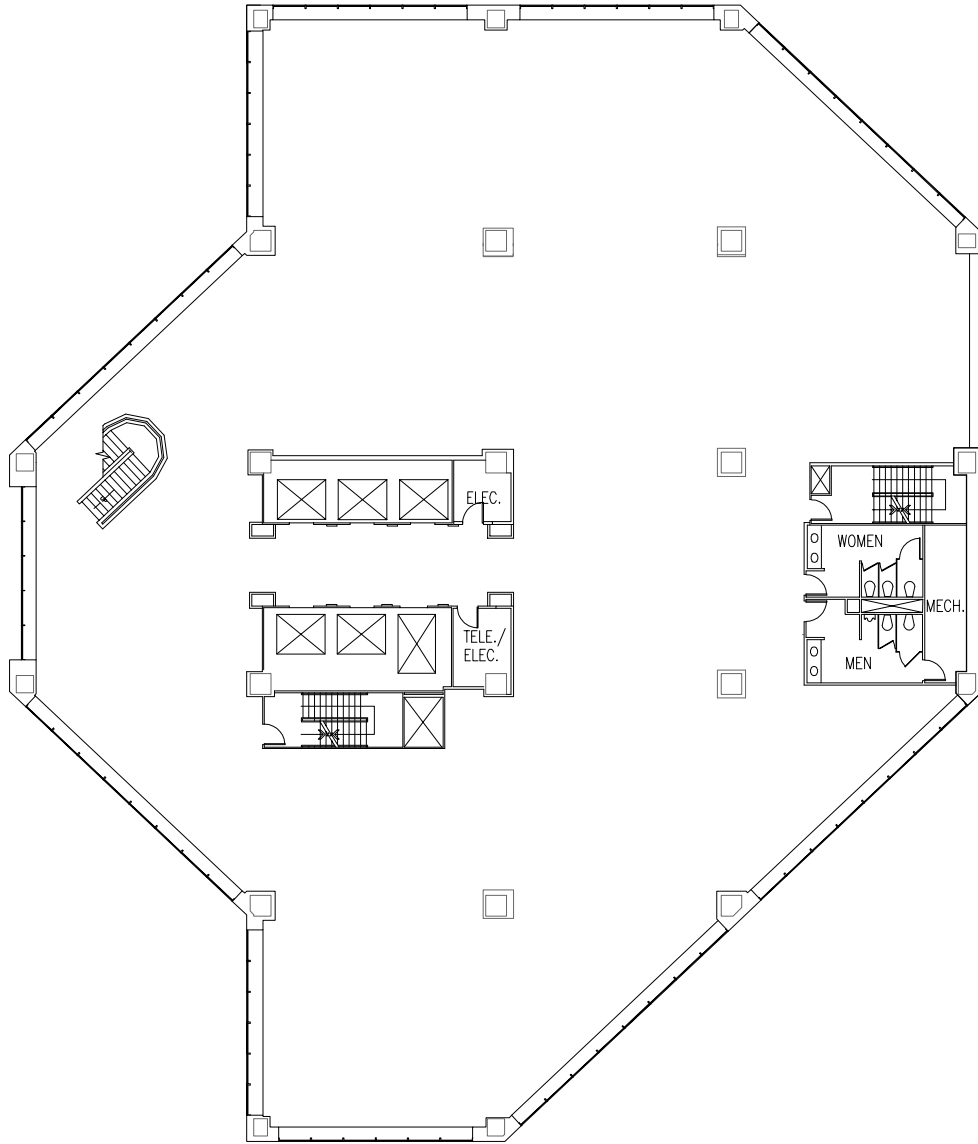




Zeller Realty Group®

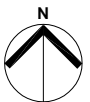


**schott** design  
 www.schottdesign.com

SCALE: NOT TO SCALE  
 PROJECT: 2018.816  
 PROJECT MGR: AS

## SUITE 900

CAPITAL CENTER - SOUTH TOWER  
 201 N. ILLINOIS ST., INDIANAPOLIS, INDIANA



17,333 RENTABLE SQ. FT.  
 DATE: 09.27.18