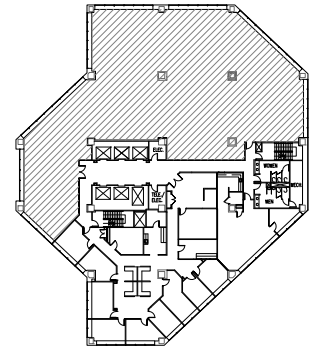
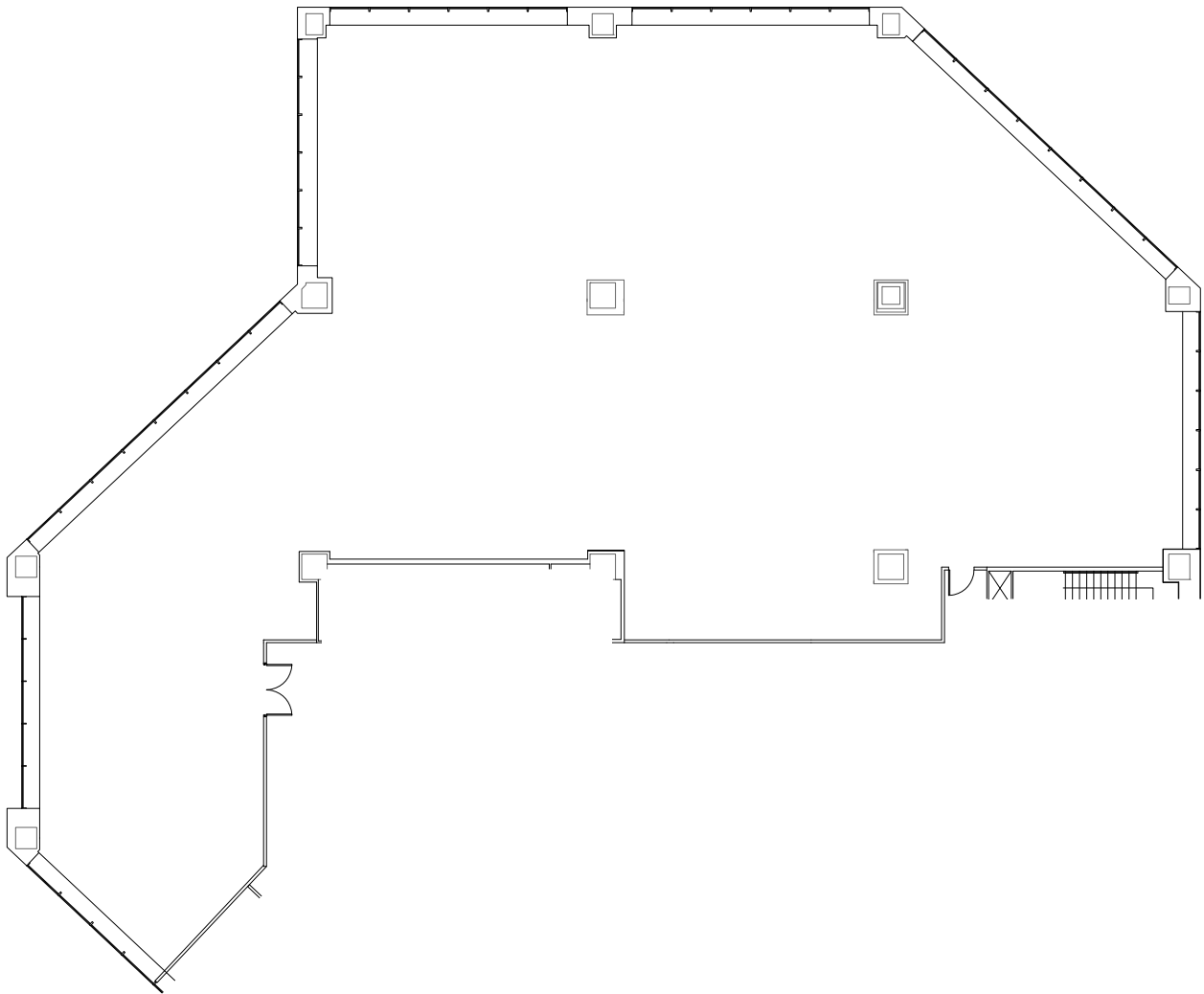




Zeller Realty Group®



**KEY PLAN**  
NOT TO SCALE

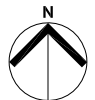


**schott** design  
www.schottdesign.com

SCALE: NOT TO SCALE  
PROJECT: 2019.816  
PROJECT MGR: AS

## SUITE 1200

CAPITAL CENTER - SOUTH TOWER  
251 N. ILLINOIS ST., INDIANAPOLIS, INDIANA



9,952 RENTABLE SQ. FT.  
DATE: 09.26.19