

# 401

NORTH MICHIGAN

## SUITE 1500

21,700 RSF

**Headcount:** 91 employees

**Efficiency:** 238 rsf/employee

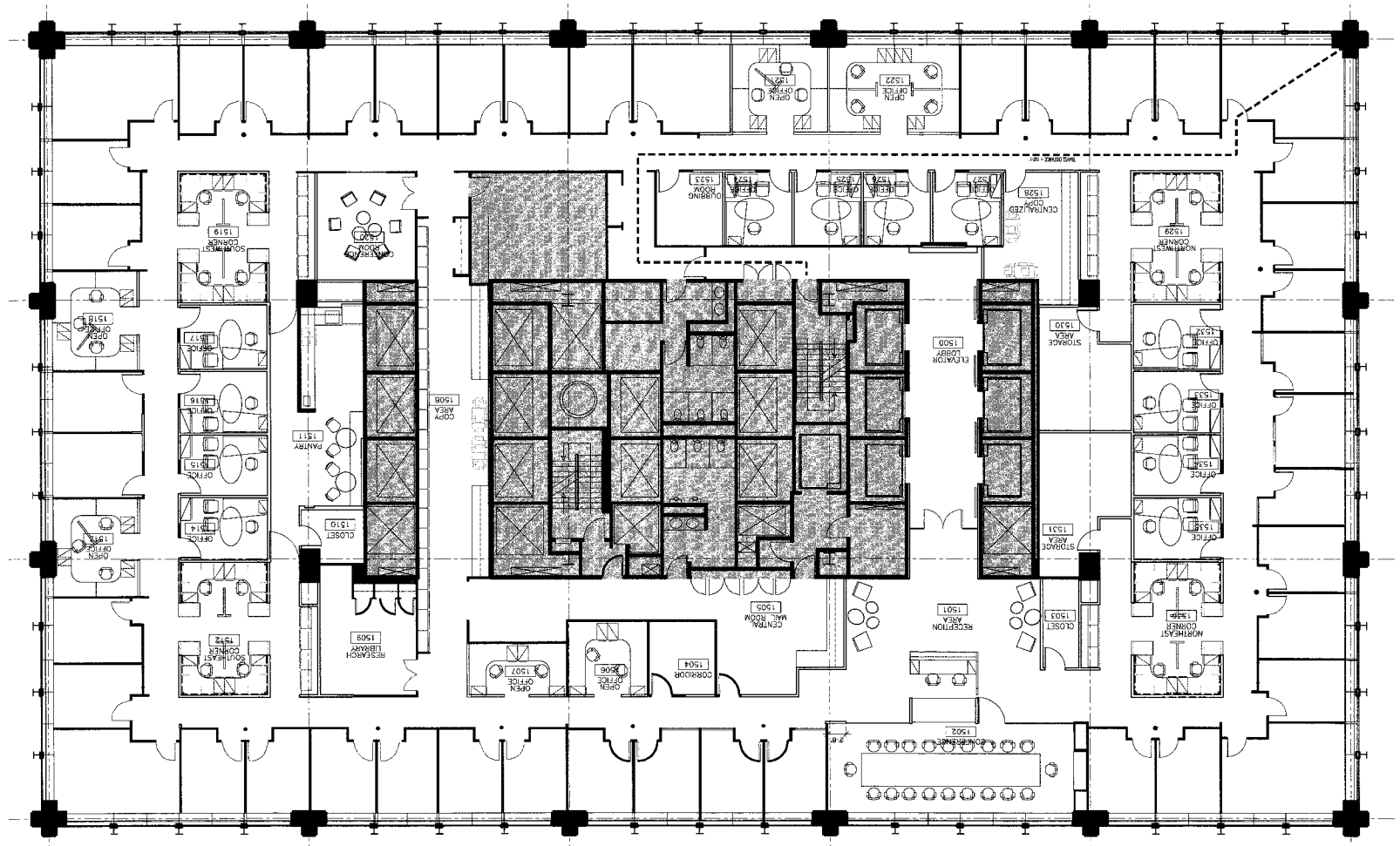
- Workplace**
- 43 private perimeter offices
- 14 private interior offices
- 34 workstations

- Common**
- kitchen/pantry
- reception
- telco room
- 2 conference rooms
- 4 storage/copy rooms
- library
- mail room

- Other**
- Lake Michigan, Michigan Ave.
- Chicago River views

**Howard Meyer**  
312.229.8970  
hmeyer@zeller.us

**Erica Marshall**  
312.229.8942  
emarshall@zeller.us



# 401

NORTH MICHIGAN

### SUITE 1500 21,700 RSF

**Headcount:** 113 employees

**Efficiency:** 192 rsf/employee

**Workplace**

- 22 private perimeter offices
- 4 private interior offices
- 87 workstations

**Common**

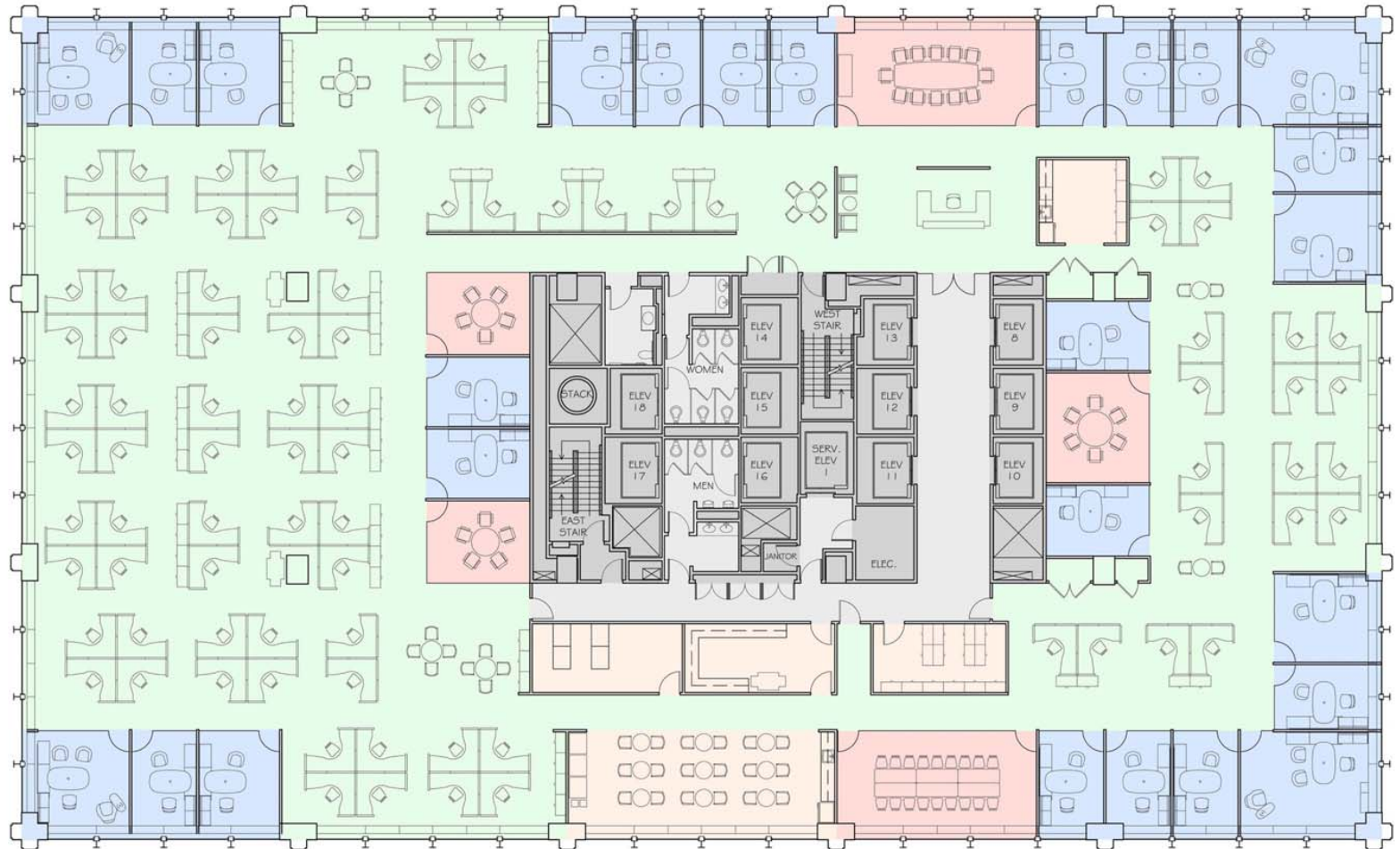
- kitchen/breakroom & pantry
- reception
- 2 conference rooms
- 3 huddle rooms & 5 huddle areas
- 2 storage/telco rooms
- copy room & 2 copy areas

**Other**

- Lake Michigan, Michigan Ave.
- Chicago River views

**Howard Meyer**  
312.229.8970  
hmeyer@zeller.us

**Erica Marshall**  
312.229.8942  
emarshall@zeller.us



# 401

NORTH MICHIGAN

### SUITE 1500 21,700 RSF

**Headcount:** 130 employees

**Efficiency:** 167 rsf/employee

#### Workplace

12 private perimeter offices

118 workstations

kitchen/breakroom

reception

#### Common

3 conference rooms

5 huddle rooms & 6 huddle areas

4 storage/telco rooms

phone booth

2 copy rooms & 2 copy areas

#### Other

Lake Michigan, Michigan Ave.

Chicago River views

**Howard Meyer**  
312.229.8970  
hmeyer@zeller.us

**Erica Marshall**  
312.229.8942  
emarshall@zeller.us

