

401  
NORTH MICHIGAN

## SUITE 1650

7,088 RSF

**Headcount:** 30 employees

**Efficiency:** 233 rsf/employee

### Workplace

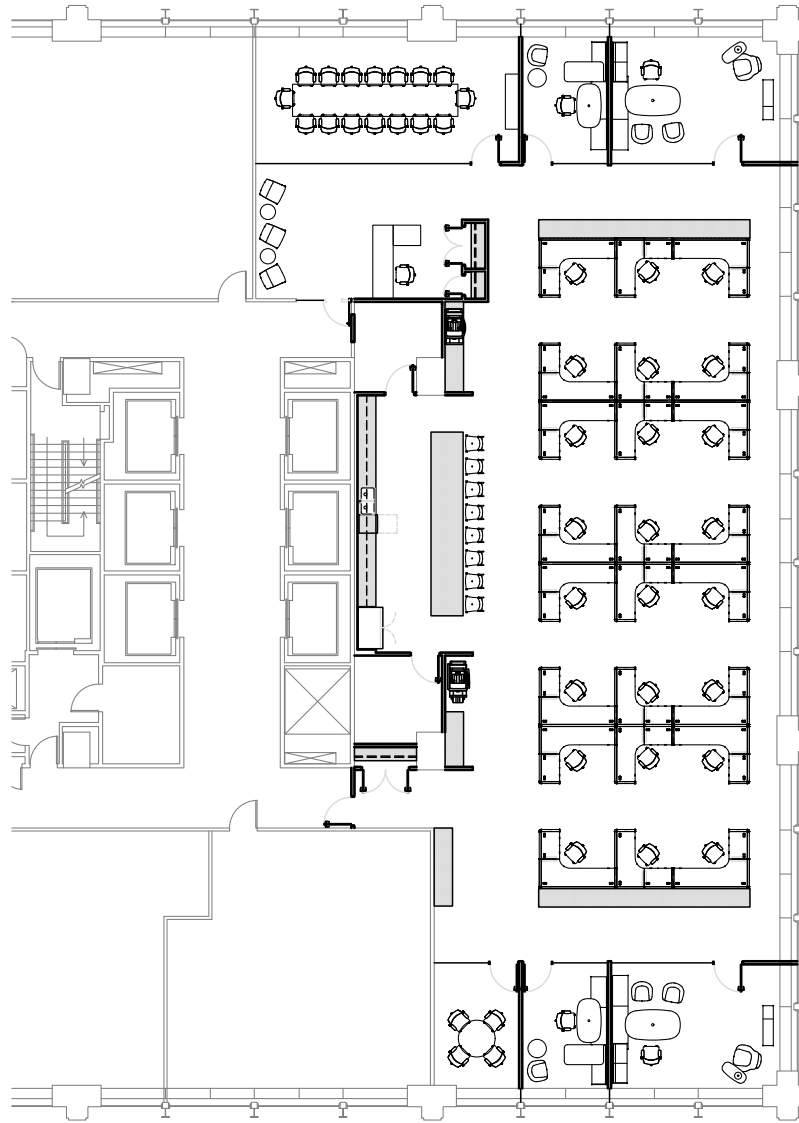
5 private offices  
25 workstations

### Common

kitchen/copy  
reception  
telco closet  
conference room  
huddle room

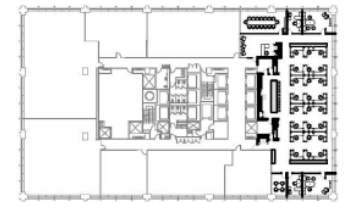
### Other

elevator ID  
Michigan Ave. & Chicago River views  
Lake Michigan views



## SPEC PLAN A

AREA AMENITIES



[Click to View the 401 Website](#)

[Click to Watch the 401 Video](#)



Howard Meyer  
312.229.8942  
hmeyer.zeller.us

401  
NORTH MICHIGAN

# SPEC PLAN B

AREA AMENITIES



## SUITE 1650

7,088 RSF

**Headcount:** 31 employees

**Efficiency:** 225 rsf/employee

### Workplace

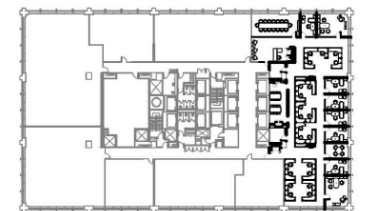
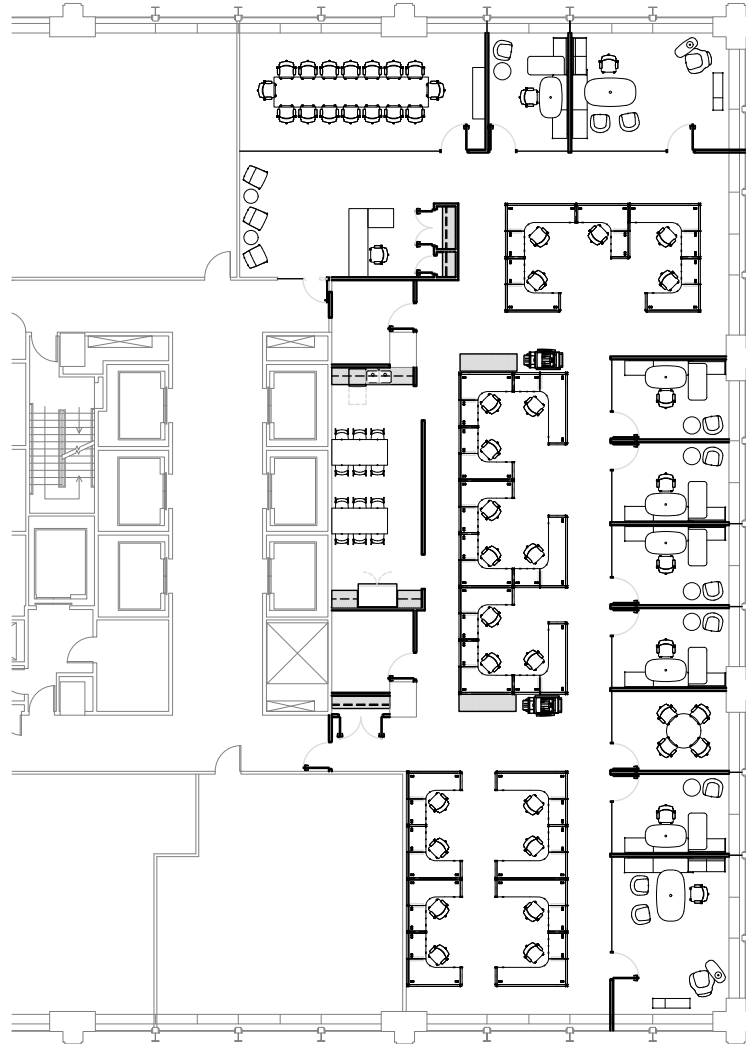
8 private offices  
23 workstations

### Common

kitchen/copy  
reception  
telco closet  
conference room  
huddle room

### Other

elevator ID  
Michigan Ave. & Chicago River views  
Lake Michigan views



Howard Meyer  
312.229.8942  
hmeyer.zeller.us

[Click to View the 401 Website](#)

[Click to Watch the 401 Video](#)

401  
NORTH MICHIGAN

## SUITE 1650

7,088 RSF

**Headcount:** 29 employees

**Efficiency:** 241 rsf/employee

### Workplace

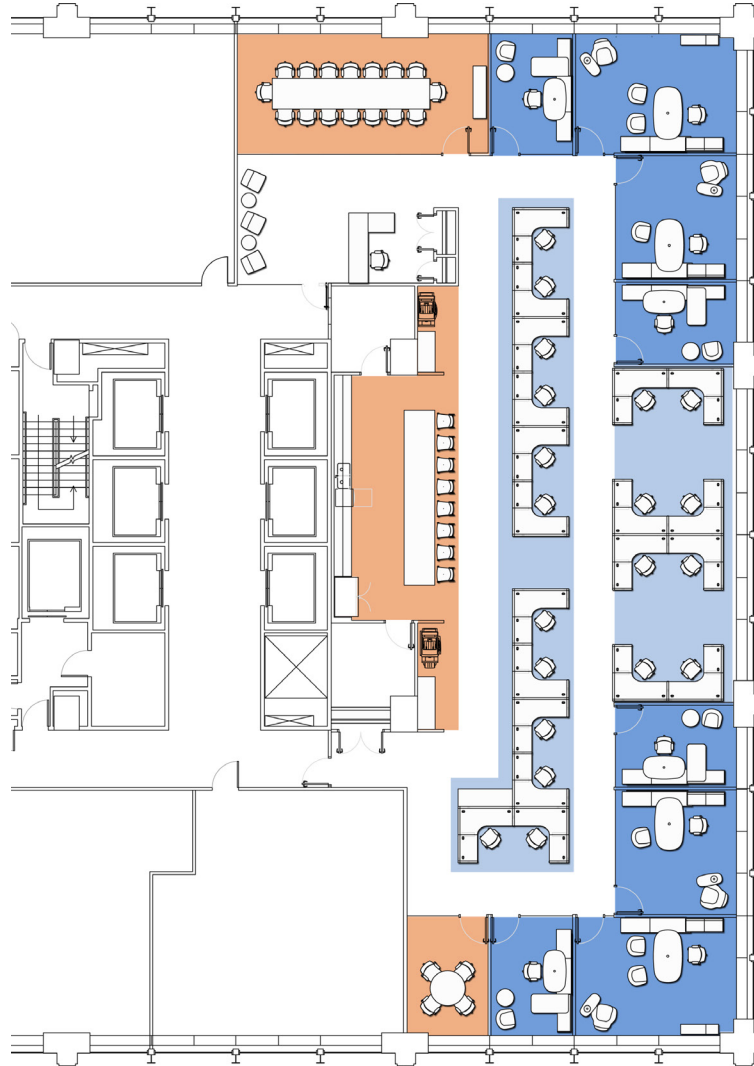
8 private offices  
25 workstations

### Common

kitchen/copy  
reception  
telco closet  
conference room  
huddle room

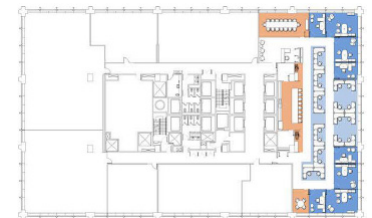
### Other

elevator ID  
Michigan Ave. & Chicago River views  
Lake Michigan views



## SPEC PLAN C

AREA AMENITIES



[Click to View the 401 Website](#)

[Click to Watch the 401 Video](#)



Howard Meyer  
312.229.8942  
hmeyer.zeller.us